

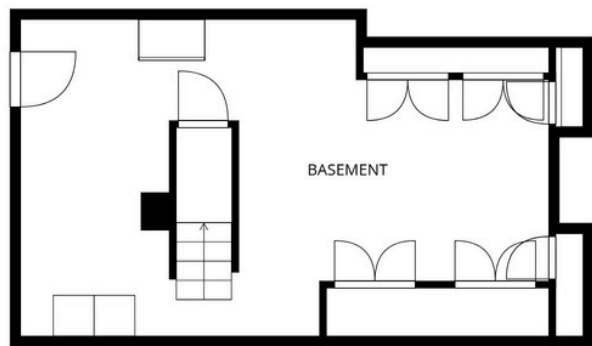
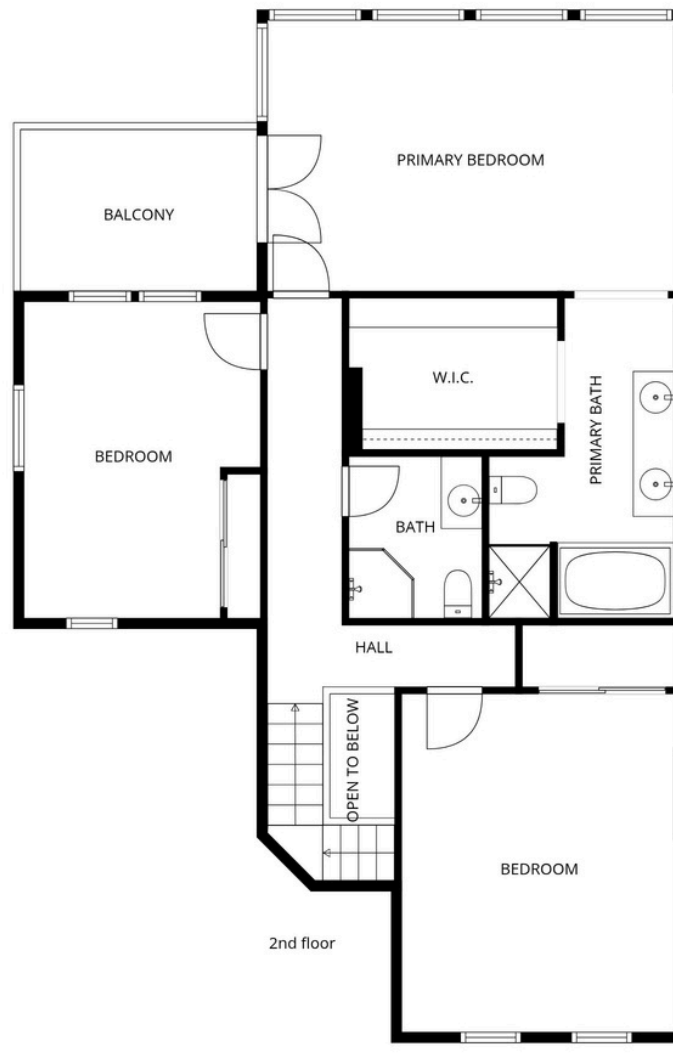


3810 Forest Beach Dr NW, Gig Harbor

Morrison House | Sotheby's  
INTERNATIONAL REALTY

Exclusively Listed By:

Michael Morrison | 253.606.5925





## Horsehead Bay Living

WATERFRONT home on the outer edge of the HORSEHEAD BAY community. Commanding water & MOUNTAIN views are the backdrop for an incredible life on the water; the rear of the home faces west, giving incredible SUNSET views over snow-capped OLYMPIC mountains, Carr Inlet, and Henderson Bay to your right. A move-in-ready, even turnkey home awaits. You are greeted with extensive hardwoods, a great room w/ walls of glass, and a gas fireplace. The nearby dining room and great room both flow to an oversized Trex-type deck, perfect for relaxing and entertaining alike. The kitchen is complete w/ gourmet appliances, solid surface counters, and a walk-in pantry. Upstairs, you have 3 bedrooms - one with deck access & the PRIMARY w/ full 180 VIEWS. The primary suite is an escape in and of itself; you feel like you are perched to take in everything from the sunsets, wildlife, and water. The primary is complete w/ walk in closet; en-suite bath & step in shower. The lower level of the home is perfect for additional storage. Other added perks; 2 Car Garage & 8 Car detached carport; newer roof, freshly painted interiors; AIR CONDITIONING; SMART HOME Features & impeccable maintenance. The waterfront is the perfect space with room for mooring bouy's out front; bulkhead w/ fresh water line. This is the preferred location in Horsehead Bay since you have the best of both worlds; outer-edge western exposure, views and in a tight knit community where life takes a deep breath , then you can exhale.









# Horsehead Bay Living

3810 Forest Beach Dr NW, Gig Harbor, WA 98335

- Waterfront home on edge of Horsehead Bay +/- 50'
- Mountain views
- West-facing, giving amazing sunset views
- Move-in ready
- Hardwood floors throughout
- Great room with walls of glass
- Flowing kitchen with stainless steel appliances
- Solid surface counters in the kitchen
- Walk-in pantry
- Trex-type deck off the living room
- Primary suite with extensive water and mountain views
- Walk-in closet
- En-suite primary bath with step-in shower
- Large lower-level perfect for extra storage
- Newer roof and fresh interior paint
- 2-car garage and 8-car detached carport
- Air conditioning and smart home features
- 2026 Property Taxes: \$15,990 | Remodel 1986
- 3,242 Sq Feet | 3 beds | 2.25 baths
- View online at MyUniqueHome.com



## MICHAEL MORRISON

THE UNIQUE HOME SPECIALIST

253.606.5925

MICHAEL@MYUNIQUEHOME.COM

MYUNIQUEHOME.COM

## MORRISON HOUSE SOTHEBY'S INTERNATIONAL REALTY

3004 HARBORVIEW DR  
GIG HARBOR, WA 98335



©2022 Sotheby's International Realty and the Sotheby's International Realty logo are registered (or unregistered) service marks used with permission. Sotheby's International Realty Affiliates LLC fully supports the principles of the Fair Housing Act and the Equal Opportunity Act. Each office is Independently Owned and Operated. If your property is listed with a real estate broker, please disregard. It is not our intention to solicit the offerings of other real estate brokers. We are happy to work with them and cooperate fully. BUYER TO VERIFY ALL INFORMATION CONTAINED HEREIN.

Morrison House | Sotheby's INTERNATIONAL REALTY